

DR ^{17x17} Wizard EZ

17" x 17" Wireless DR Flat Panel System

Tailored for companion animal veterinary professionals, this detector sets a new standard with features like AED technology, a cassette-sized design, and on-board storage. The TFT technology enhances sensitivity at low x-ray doses, ensuring clear and effective imaging for companion animal veterinary practitioners.



Extended Battery Life

Dual batteries enable the detector to stay operational for up to 14 hours - an entire work day! The batteries can be charged together in the detector or in the dual-battery charger.



Light & Robust Design with IP67

Metal frame made of Magnesium promises a high level of endurance while maintaining ultra-light weight. And the IP 67 rating prevents any leakage of dust or liquids.

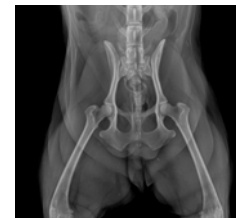


Enhanced AED®

Ultra high sensitive 2xAED technology significantly reduces error and improves sensitivity generated during detection.

ABOUT Diagnostic Imaging Systems

Diagnostic Imaging Systems (DIS) has been providing quality imaging products at the best possible possible prices since 1983. DIS products are specifically tailored to match all your practice needs.



**DIAGNOSTIC
IMAGING SYSTEMS**

QUALITY | INTEGRITY | VALUE...privately owned since 1983

www.vetxray.com

Contact us:

605.341.2433
scott@vetxray.com
2325 E. Saint Charles St.
Rapid City, SD 57703





Dual Battery Charger

User-friendly & Convenient Features

On-Board Image Storage

Up to 100 images can be stored in on-board storage in order to protect acquired images. In a mobile environment, the detector can acquire X-ray images in a stand-alone mode without a console software.

Status Monitoring OLED

The OLEO display provides information about Wireless/Wired connection status, Wireless Mode (AP), Battery level and IP address of the detector.

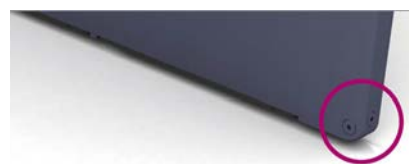


Web Base Viewer & Control

Acquired images can be viewed through any type of mobile devices based on iOS, Android or Windows in almost real time.

Anti-scratch Bump

Each of the four corners and the bottom of the detector has anti-scratch bumps to help keep the product exterior clean.



Specifications

Conversion Screen (Scintillator)	GOS
TFT Panel	a-SI TFT
Pixel Pitch	140 μm
Image Data (AD conversion)	Pure 16 bit
Image Resolution	3,072 x 3,072
Image Size	17" x 17"
On-board Storage	< 100 Images
Wired / Wireless Communication	Gigabit Ethernet / IEEE 802.11ac
Trigger Mode	High Sensitive 2xAED (Auto Exposure Detection)
Calibration Mode	ACC (Auto Calibration Control) / Manual
Water & dust resistance	IP67
X-Ray Voltage Range	40 ~ 150kVp
Voltage	AC 100 ~ 240V, 50/60Hz, DC18V 3.5A
Environment	Storage: 14°F ~ 140°F, 10% ~ 90% RH (non-condensing) Operation: 50°F ~ 95°F, 20% ~ 75% RH (non-condensing)
Battery Type	Lithium-Ion Polymer Battery
Battery Full Operation Time	12 Hours
Dimensions	18.15" x 18.15" x 0.591"
Weight (with / without battery)	6.614 lbs / 8.598 lbs (dual battery)

