

Small Animal X-Ray Package

Complete Mobile X-Ray System

Cost-effective solution for companion animal clinics, complete with mobile x-ray table, HF portable x-ray generator, and 17x17 cassette-size flat panel detector.

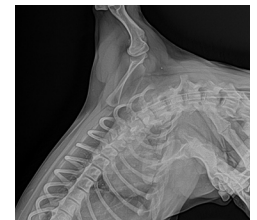


- 17x17 Cassette-size Flat Panel Detector
- Advanced Image Processing with Voyance Software
- 125kV/100mA Portable HF Generator
- Bluetooth Connectivity
- 6 sets of APR exposure parameter shortcut keys to reduce errors and improve efficiency.
- Mobile X-Ray Examination Table

ABOUT

Diagnostic Imaging Systems

Diagnostic Imaging Systems (DIS) has been providing quality imaging products at the best possible possible prices since 1983. DIS products are specifically tailored to match all your practice needs.



**DIAGNOSTIC
IMAGING SYSTEMS**

QUALITY | INTEGRITY | VALUE...privately owned since 1983

www.vetxray.com

Contact us:

605.341.2433

scott@vetxray.com

2325 E. Saint Charles St.
Rapid City, SD 57703



DR ^{17x17} wizard X

17"x17" Tethered Cassette-Size DR Flat Panel System



Advanced Voyance Software

- Superior Image Quality
- Exam-specific algorithms image processing
- Automatic image optimization
- Edit existing patient information/search patient by patient name, patient ID, Accession number, bar code, etc.
- True size for printing
- Resend / Reprint image
- Send/Print queue management
- User-friendly touch GUI
- Useful functions: Auto Cropping, Auto Grid Suppression, Auto Labeling, Auto Rotation, Free Rotation, Multi Layout, etc.
- Fully DICOM 3.0 Compatible: MWL, Send, Print, MPPS, etc.
- Customized functions and various themes

Specifications

Conversion Screen (Scintillator)	CSi / Gadox
Detector Type	Amorphous Silicon
Pixel Pitch	140 µm
Image Data (AD conversion)	16 bit
Image Resolution	3,072 x 3,072
Image Size	17" x 17"
Data Interface	Wired
X-Ray Sync	Lossless AED/AWC, Sync Trigger

ELITE 125100

Specifications

Max Output Power	5 kW	
Power Supply	AC 220V / 110V ± 10% 50 / 60 Hz	
kV Range	40-125	
MA's Range	1-100mAs	
mA	10 - 100	
Communication Mode	RS232/Bluetooth	
SID Measurement	Ultrasonic	
Light Source On Time	30 seconds	
X ray Tube	Focal Spot	.6/1.8mm
	Target Angle	15 degree
	Small Focal Spot Power (kW)	1.27
	Large Focal Spot Power (kW)	5.3
	Inherent Filtration (mm Al @ 75 kV)	Min.0.65
	Anode Heat Storage (kJ)	30
Weight	35 lbs	

www.vetxray.com

Contact us:

605.341.2433
 scott@vetxray.com
 2325 E. Saint Charles St.
 Rapid City, SD 57703



DIAGNOSTIC
IMAGING SYSTEMS

QUALITY | INTEGRITY | VALUE...privately owned since 1983